

## Life Fitness Model 9500 Series HR and Telemetry Equipped Treadmills

### How To... REMOVE AND REPLACE THE WAX CONTAINER KIT

**Tools Required:** Socket and ratchet set, two 7/16" wrenches, wire cutting tool, wire ties

#### Step 1

Turn the power **OFF** at the **ON/OFF** switch and then unplug the unit from the electrical outlet.

#### Step 2

Remove the STRIDING BELT (See "How To...") and the DECK (See "How To..."). Leave the unit on its left side.

#### Step 3

Use a wire cutting tool to cut the WIRE TIES securing the WAXER HOSE to the FRAME.

#### Step 4

With your fingers, remove the HOSE CLAMP on the BARBED-FITTING, and seal it off to prevent spillage. Remove the WAX CONTAINER HOSE from the BARBED-FITTING.

#### Step 5

Loosen and remove the four MOUNTING BOLTS securing the WAX CONTAINER, COVER and TRAY in place on the treadmill FRAME.

**NOTE: REMOVE THE ENTIRE ASSEMBLY FROM THE TREADMILL AND SET ASIDE.**

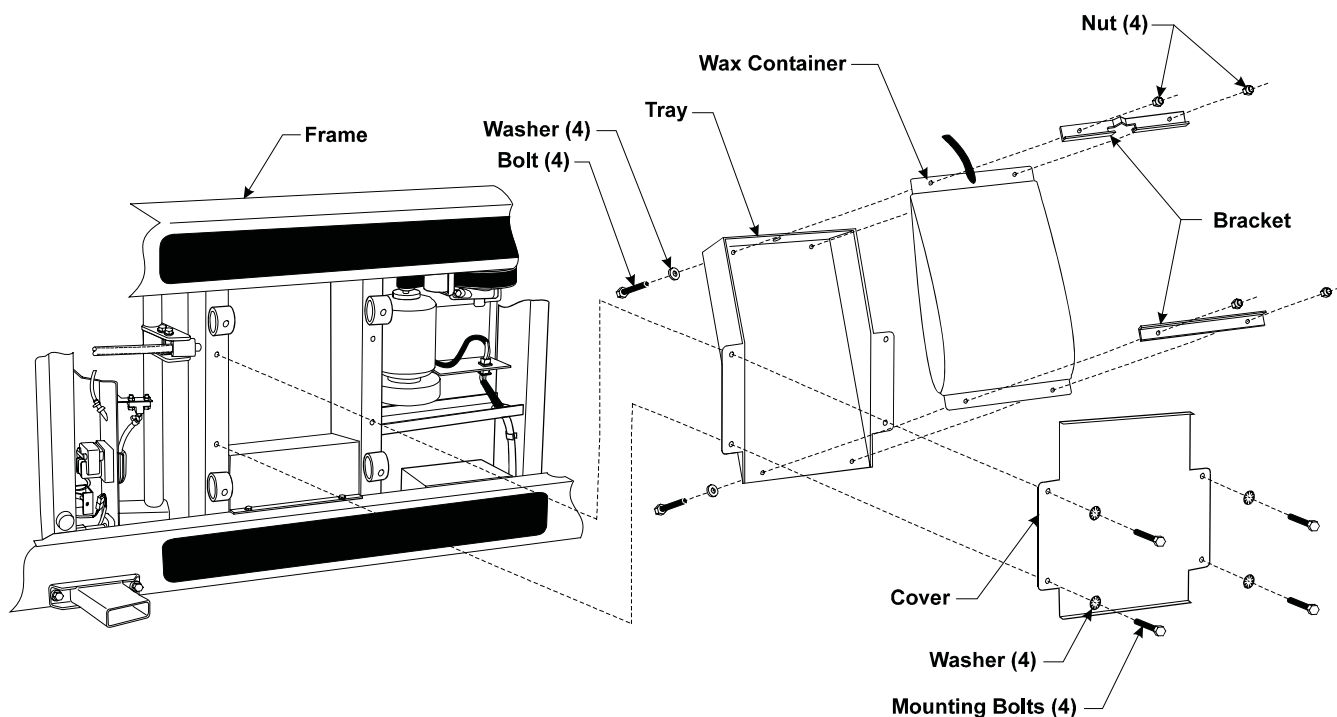
#### Step 6

Use two 7/16" wrenches to loosen and remove the four BOLTS and NUTS securing the two BRACKETS through the WAX CONTAINER into the TRAY.

#### Step 7

Lift the worn WAX CONTAINER with attached HOSE out of the TRAY and replace it with a new WAX CONTAINER and HOSE assembly.

**NOTE: THE WAX CONTAINER HOSE LENGTH VARIES IN THE MODEL 9500 SERIES. ROUTE THE HOSE THROUGH THE HOLE IN THE TRAY BEFORE INSTALLING THE COVER.**



(Continued)

## **Life Fitness Model 9500 Series HR and Telemetry Equipped Treadmills**

### **How To... REMOVE AND REPLACE THE WAX CONTAINER (Continued)**

---

**NOTE: THE NEW WAX CONTAINER DOES NOT REQUIRE THE TWO BRACKETS. DISCARD AND USE THE TWO WASHERS.**

#### **Step 8**

Align the two WASHERS with the holes in the new WAX CONTAINER and insert the two BOLTS through both items. Secure the two items to the TRAY with the two NUTS and tighten them with the two 7/16" wrenches.

#### **Step 9**

Place the COVER over the new WAX CONTAINER and position the entire assembly in the treadmill FRAME. Reinstall the four MOUNTING BOLTS and tighten them with the 7/16" wrench.

#### **Step 10**

Connect the new WAX CONTAINER HOSE to the BARBED-FITTING and press the HOSE CLAMP tightly over the connection.

**NOTE: THIS IS NORMALLY AN OPPORTUNE TIME TO INSPECT THE WAX SPRAY NOZZLE. PRESS THE SPRAY NOZZLE IN AND TWIST IT 1/4 TURN TO REMOVE. CLEAN WITH WARM WATER OR REPLACE THE SPRAY NOZZLE AS DEEMED NECESSARY.**

#### **Step 11**

Reverse Steps 1 through 3 to return all parts to their proper positions.